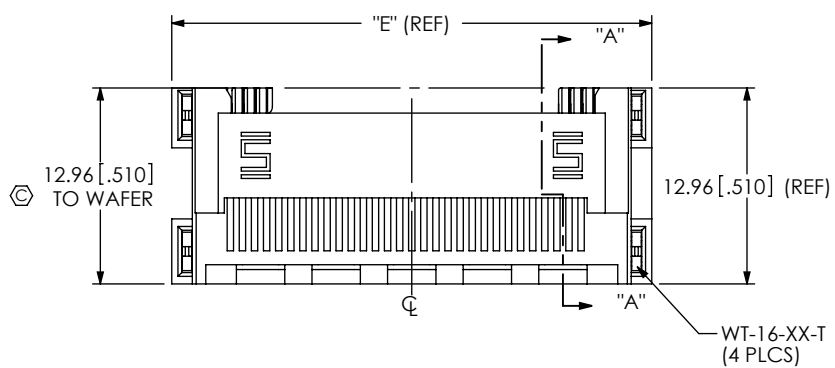


DO NOT  
SCALE FROM  
THIS PRINT



No OF POSITIONS  
-30,-40,-50 (PER ROW)

SOLDER TAIL LEAD STYLE  
-01: 1.57 [.062]  
-02: 2.36 [.093]

PLATING SPECIFICATION  
-S: 30µ" SELECTIVE GOLD, MATTE TIN ON TAILS  
(USE SUB-IM-C-256-XX.X-S-X)  
-L: 10µ" SELECTIVE GOLD, MATTE TIN ON TAILS  
(USE SUB-IM-C-256-XX.X-L-X)

BOARD SPACING  
-05.5: 5.5mm  
-07.0: 7.0mm  
\*-08.5: 8.5mm  
(\* = NOT TOOLED)

TAPE & REEL  
(STANDARD PACKAGING)  
(SEE NOTE 4)

RIGHT ANGLE  
-RA

SOLDER COMPOSITION & STYLE  
-1: 63% TIN / 37% LEAD CHARGE TAIL  
(USE SUB-IM-C-256-XX.X-1)  
-2: 96.5% TIN / 3.5% SILVER  
LEAD FREE CHARGE TAIL  
(USE SUB-IM-C-256-XX.X-2)

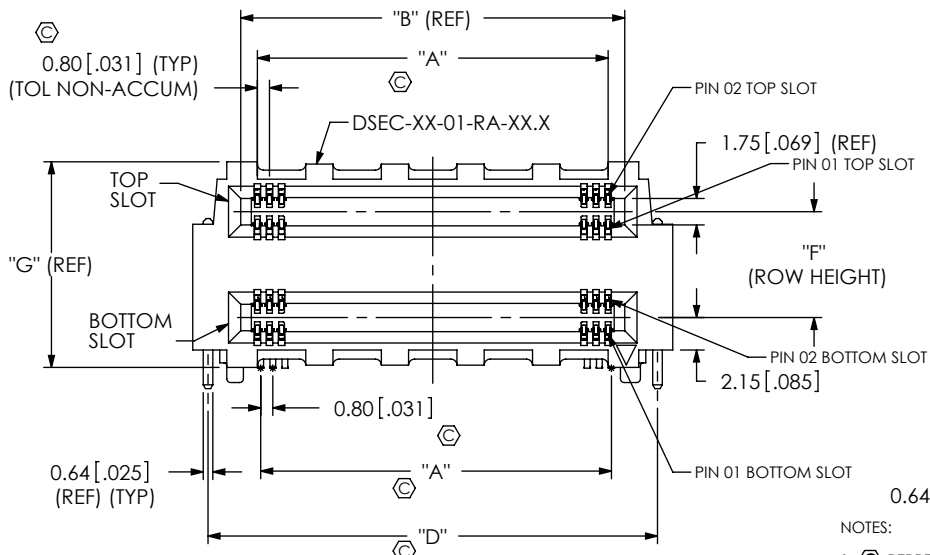


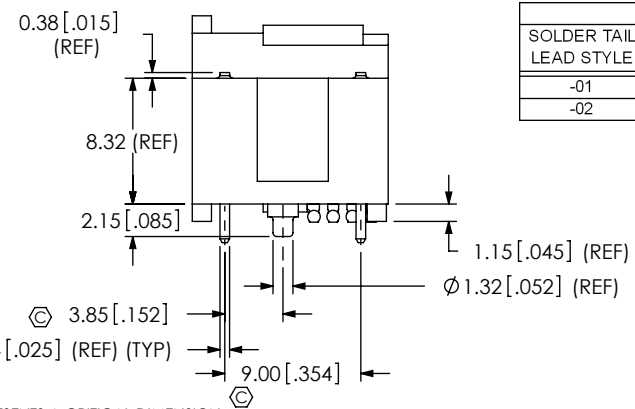
TABLE 3

PLATING	BOARD SPACING	ROW HEIGHT	"BODY CALLOUT"	"TERMINAL WAFER"
-S	-05.5	7.0	DSEC-XX-01-RA-07.0	SUB-IM-C-256-07.0-S-X
	-07.0	8.5	DSEC-XX-01-RA-08.5	SUB-IM-C-256-08.5-S-X
	*08.5	10.0	*DSEC-XX-01-RA-10.0	*SUB-IM-C-256-10.0-S-X
-L	-05.5	7.0	DSEC-XX-01-RA-07.0	SUB-IM-C-256-07.0-L-X
	-07.0	8.5	DSEC-XX-01-RA-08.5	SUB-IM-C-256-08.5-L-X
	*08.5	10.0	*DSEC-XX-01-RA-10.0	*SUB-IM-C-256-10.0-L-X

(\* = NOT TOOLED)

TABLE 4

SOLDER TAIL LEAD STYLE	"WELD TAB"	"H"
-01	WT-16-04-T	1.41 [0.055]
-02	WT-16-03-T	2.14 [0.084]



- NOTES:
- ⊕ REPRESENTS A CRITICAL DIMENSION.
  - MINIMUM PUSHOUT FORCE: 2.22N [5 LB].
  - INSPECT DIMENSION AT 4 CORNERS OF PART.
  - FOR QUANTITIES UP TO 49 PIECES, NO LEADER, TRAILER OR REEL WILL BE SUPPLIED FOR QUANTITIES OF 50-124 PIECES, NO LEADER OR TRAILER WILL BE SUPPLIED

TABLE 2

BOARD SPACING	ROW HEIGHT	"F"	"G"
-5.5MM	7.00	7.00 [1.276]	13.80 [1.535]
-7.0MM	8.50	8.50 [1.335]	15.10 [1.594]
*-8.5MM	10.00	10.00 [1.394]	16.60 [1.654]

(\* = NOT TOOLED)

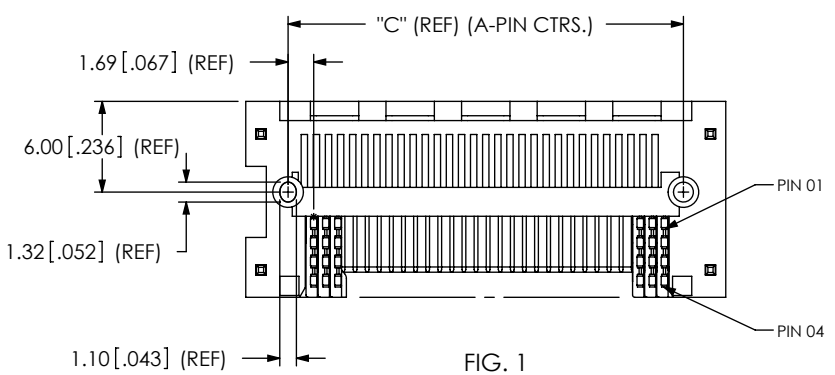
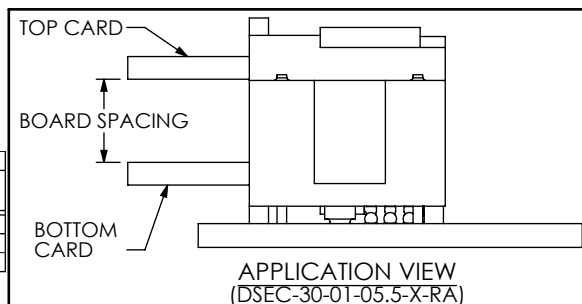


TABLE 1

No. OF POS. PER ROW	"A"	"B"	"C"	"D"	"E"
-30	23.20 [1.913]	25.40 [1.000]	26.15 [1.030]	29.73 [1.170]	31.75 [1.250]
-40	31.20 [1.228]	33.40 [1.315]	34.15 [1.344]	37.73 [1.485]	39.75 [1.565]
-50	39.20 [1.543]	41.40 [1.630]	42.15 [1.659]	45.73 [1.800]	47.75 [1.880]

UNLESS OTHERWISE SPECIFIED, DIMENSIONS ARE IN MILLIMETERS [INCHES]. TOLERANCES ARE:

DECIMALS ANGLES  
X.X: ±0.3 [0.1] 2°  
X.XX: ±0.13 [0.05]  
X.XXX: ±0.051 [0.020]

MATERIAL: DO NOT SCALE DRAWING SHEET SCALE: 2:1  
INSULATOR: VECTRA E130i  
CONTACT: PHOS BRONZE

PROPRIETARY NOTE  
THIS DOCUMENT CONTAINS INFORMATION CONFIDENTIAL AND PROPRIETARY TO SAMTEC, INC. AND SHALL NOT BE REPRODUCED OR TRANSFERRED TO OTHER DOCUMENTS OR DISCLOSED TO OTHERS OR USED FOR ANY PURPOSE OTHER THAN THAT WHICH IT WAS OBTAINED WITHOUT THE EXPRESSED WRITTEN CONSENT OF SAMTEC, INC.

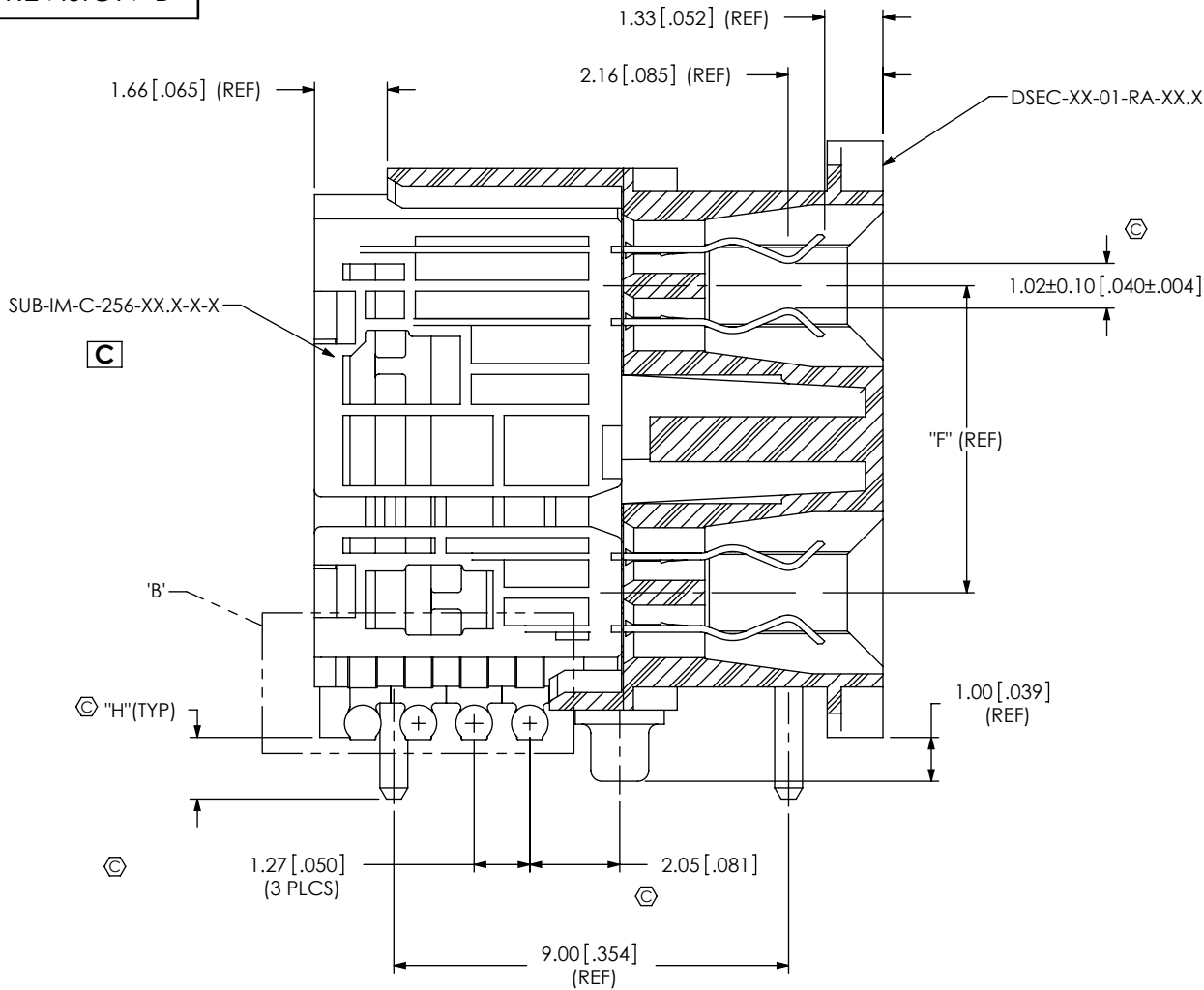
**samtec**

520 PARK EAST BLVD, NEW ALBANY, IN 47150  
PHONE: 812-944-6733 FAX: 812-948-5047  
e-Mail: info@SAMTEC.com code: 55322

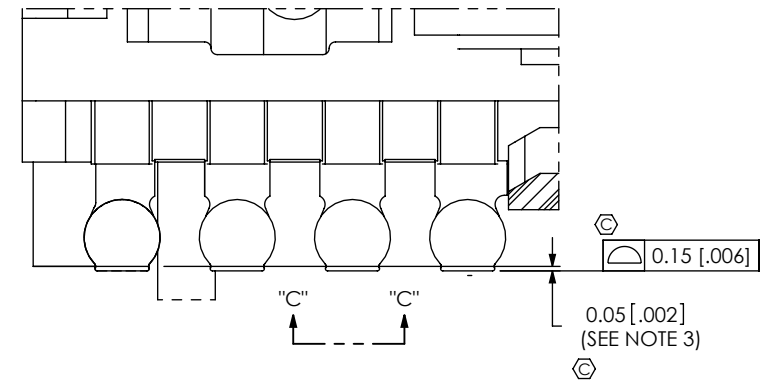
DESCRIPTION:  
0.8mm PITCH RIGHT ANGLE ASSEMBLY

DWG. NO.  
**DSEC-XX-XX-X-XX.X-X-RA-TR**

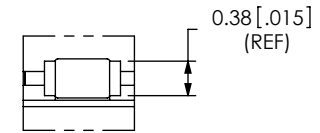
BY: KNOWLDEN 8/4/08 SHEET 1 OF 2



SECTION "A"-"A"  
SCALE 6 : 1  
(VIEW ROTATED 90° CCW FOR CLARITY)



DETAIL "B"  
SCALE 12 : 1  
(ONE SOLDER CHARGE REMOVED TO SHOW CONTACT TAIL)



SECTION "C"-"C"  
SCALE 12 : 1

CRITICAL DIMENSION INSPECTION INSTRUCTION TABLE		
ASSEMBLY OPERATION	START-UP INSPECTION INSPECT CODE A	IN-PROCESS INSPECTION INSPECT CODE B
FILL WAFERS		C1, C2, C3, C4, C5, C9, C11
FILL WELD TABS		C6, C7, C10, C12
FINISHED ASSEMBLY		C6, C8, C12, C13, C14

**PROPRIETARY NOTE**  
THIS DOCUMENT CONTAINS INFORMATION CONFIDENTIAL AND PROPRIETARY TO SAMTEC, INC. AND SHALL NOT BE REPRODUCED OR TRANSFERRED TO OTHER DOCUMENTS OR DISCLOSED TO OTHERS OR USED FOR ANY PURPOSE OTHER THAN THAT WHICH IT WAS OBTAINED WITHOUT THE EXPRESSED WRITTEN CONSENT OF SAMTEC, INC.

DO NOT SCALE DRAWING

SHEET SCALE: 2:1



520 PARK EAST BLVD, NEW ALBANY, IN 47150  
PHONE: 812-944-6733 FAX: 812-948-5047  
e-Mail: info@SAMTEC.com code: 55322

DESCRIPTION:  
0.8mm PITCH RIGHT ANGLE ASSEMBLY

DWG. NO.  
DSEC-XX-XX-X-XX.X-X-RA-TR

BY: KNOWLDEN 8/4/08 SHEET 2 OF 2